

GUIDELINES FOR PROGRAM INSTALLATION

- 1) PROVIDE YOUR MODEM CODE TO PRODUCER IN ORDER TO BE SURE THAT YOUR MODEM IS ACTIVE FOR COMMUNICATION



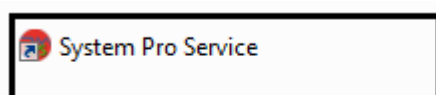
PIC. 1

- 2) INSTALL THE PROGRAM ON YOUR PC



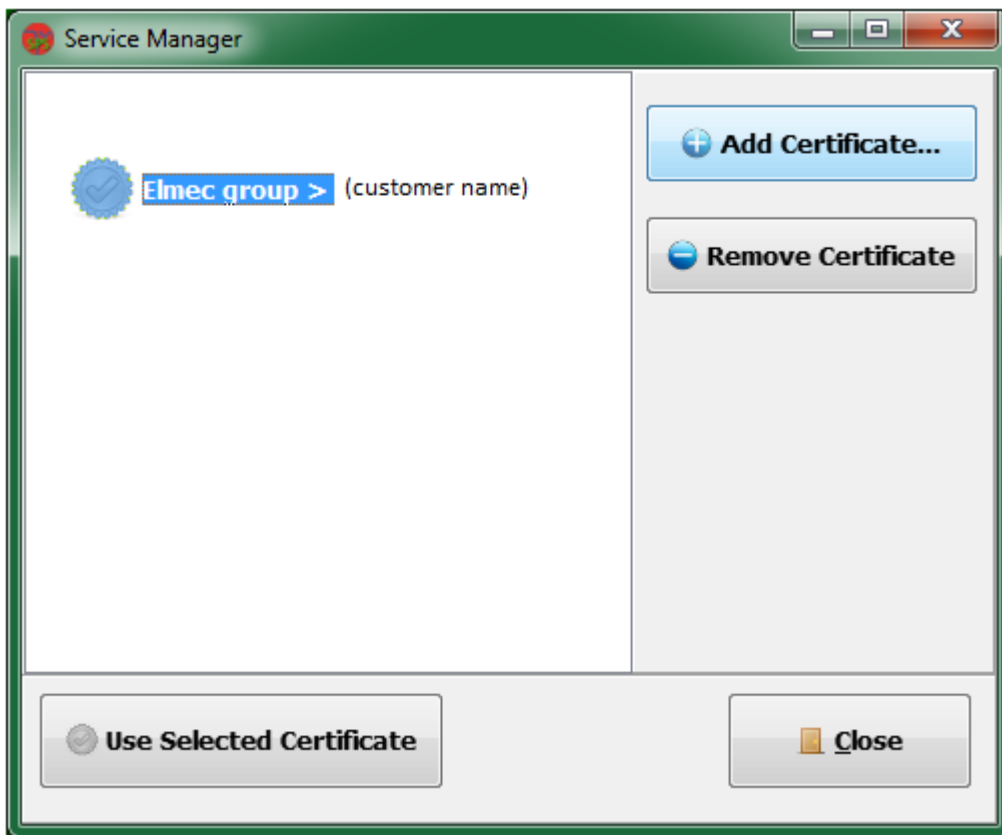
PIC. 2

- 3) IF THE PROGRAM HAS BEEN INSTALLED CORRECTLY YOU SHOULD SEE THIS ICON



PIC.3

4) IN ORDER TO ACTIVE THE PROGRAM YOU NEED TO SELECT YOUR PERSONAL CERTIFICATE AND OPEN IT



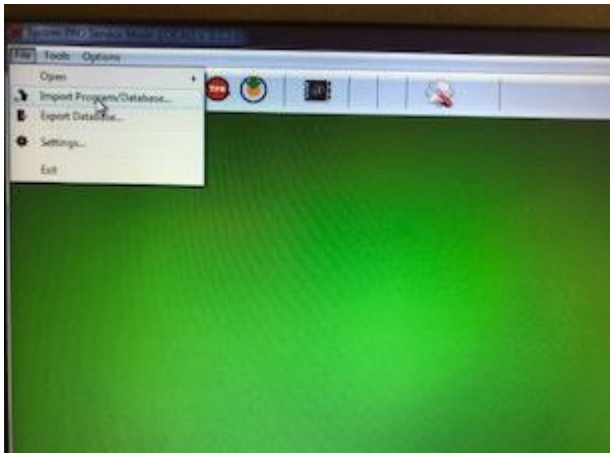
PIC.4



The file with certificate you find inside the folder "Certificato" file to select is the file with extension : ".spscert"

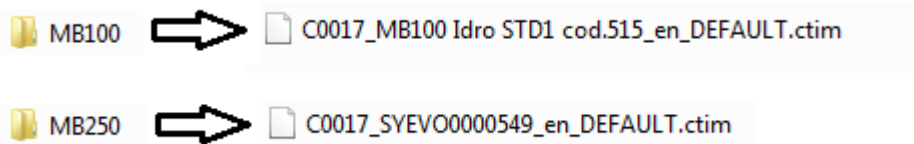
5) ONCE YOU HAVE OPENED THE PROGRAM LAST STEP BEFORE BEING ABLE TO FULLY USE YOUR PROGRAM IS TO IMPORT THE DATABASE OF YOUR BURNER

Select from FILE the option IMPORT PROGRAM/DATABASE



PIC.5

And select your database with extension .ctim (received from manufacturer)



PIC. 6

If you are using model B-home, Essential, B-70, B-90 you will select file with extension .ctim from folder “MB100”

If you are using model B-one, B-two, B-three, B-five you will select file with extension .ctim from folder “MB250”

6) IN ORDER TO CONNECT THE PROGRAM TO YOUR BURNER SELECT product connection



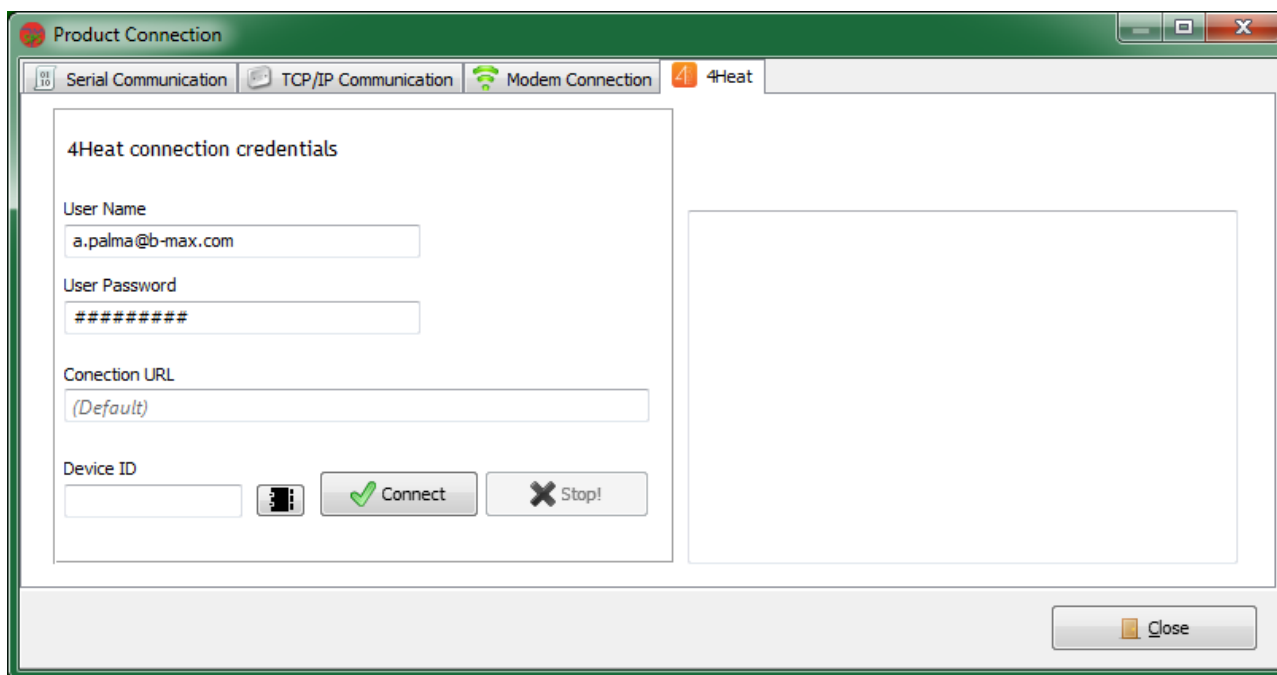
PIC.7

7) SELECT THE SECTION “ 4 HEAT” AND INSERT YOUR CREDENTIAL

User name and Password must be the same you have created when you have downloaded the APP B MAX HEAT

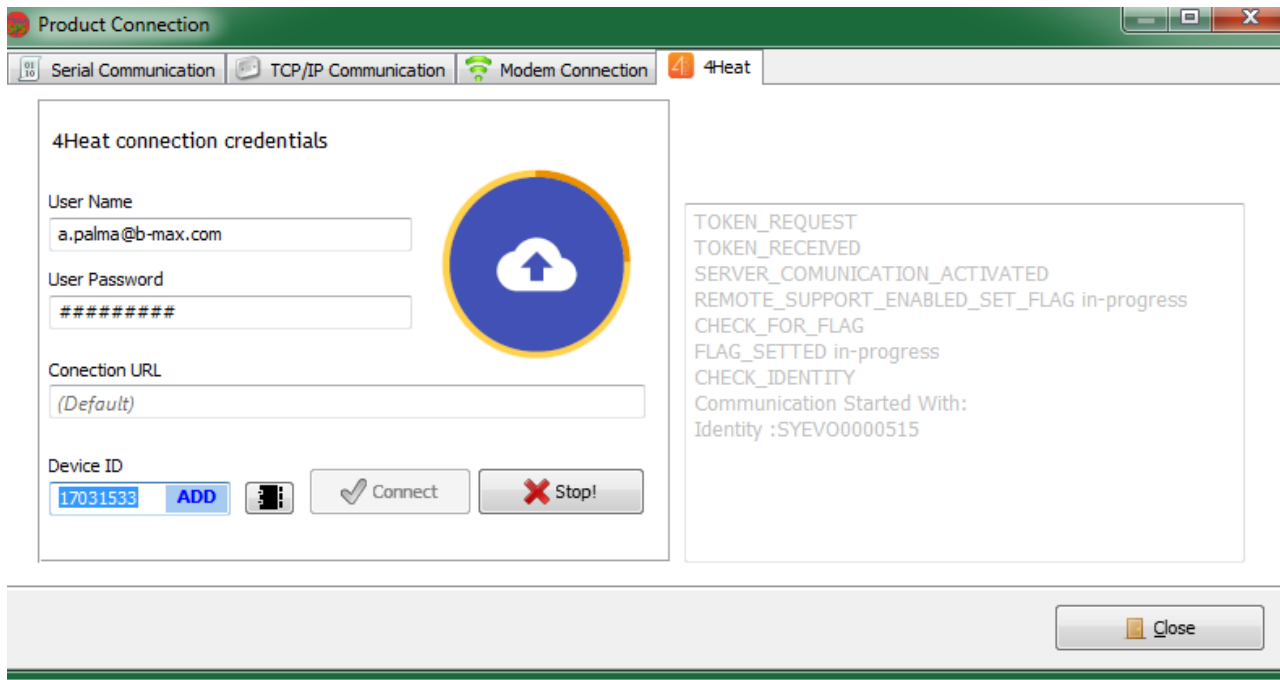
CONNECTION URL is not necessary

DEVIDE ID must be inserted the ID of the device you need to check (is under the modem check PICT 1)



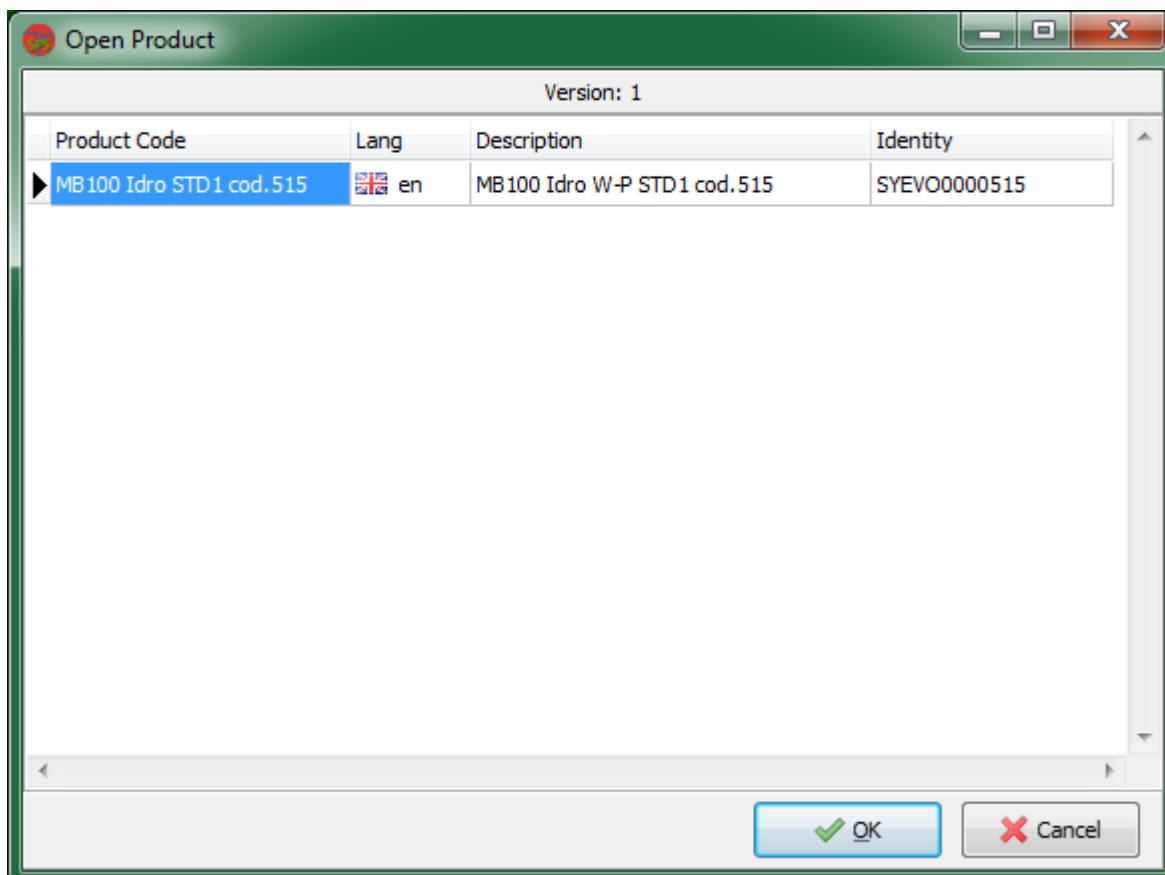
PIC.8

once you click on CONNECT the connection process will need at least 60 seconds depending on speed of internet



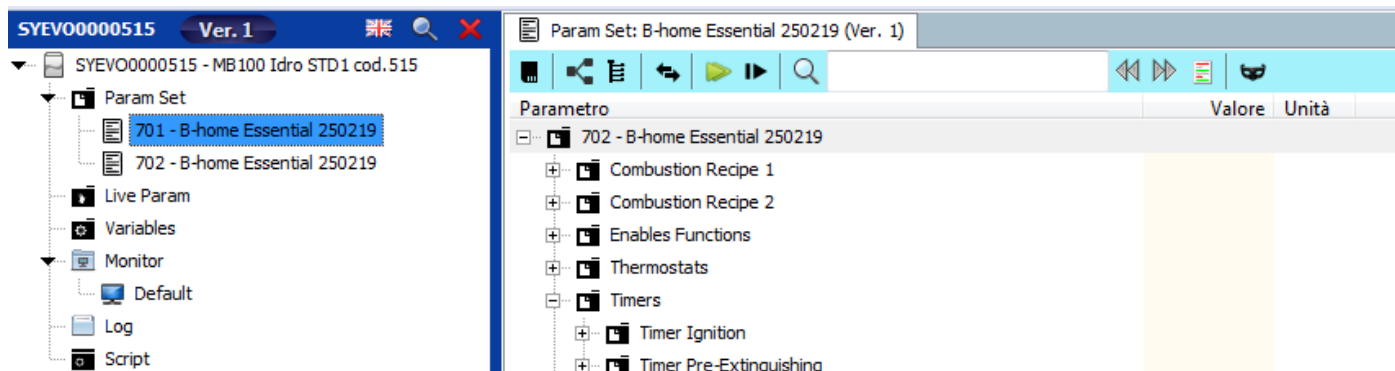
PIC.9

If everything has been done correctly you should see this window on your screen



PIC.10

You can click ok and you can edit your settings on this page



PIC.11

- 8) in order to let the program communicate with the burner is important to active the option REMOTE ASSISTANCE ACTIVATION from the app associated with the burner

